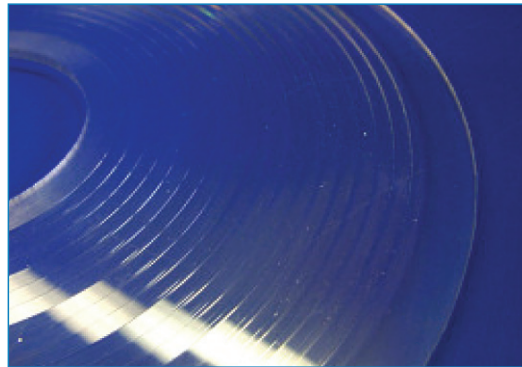


Circular Fresnel Lenses **CFL**



Circular Fresnel Lenses (CFL) are typically used for picture creating systems, magnification, concentration (of sunlight), and many more applications.

Product data:

standard material:	PMMA (acrylic) label: CFL other material (PC) upon request
possible sizes:	round, diameter up to 600 mm rectangle up to 1500 mm x 400 mm other sizes upon request customized
thickness:	3 mm nominal, actually 3.0+0.2 to 3.0+0.5 mm (1.0 up to 5.0 mm upon request, other sizes available upon request)
prism size:	variable pitch (0.2 up to 2.5 mm)
optical attributes:	by customer specification
refractive index:	1.491
transmission:	92% (acrylic clear)
temperature range:	-40°C up to +80°C (acrylic) / 120°C (PC)

Service: Development of prismatic microstructures for your specific applications, tooling and series production.