

The ADP is a special application of the Linear De-glaring Prism (LDP). These prisms are asymmetrical with a one-sided perpendicular flank. Parallel light is deflected asymmetrically and therefore enables directed illumination of objects and surfaces.

Key features

highly transparent asymmetrical microstructured prism sheet

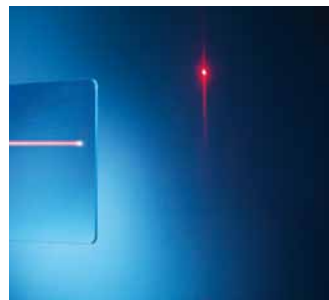
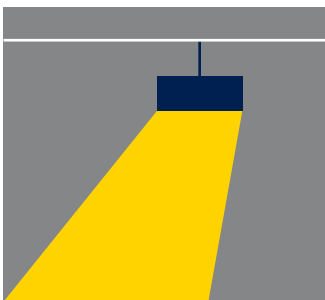
asymmetrical prisms with a one-sided perpendicular flank, parallel/collimated light is deflected at 20 degrees

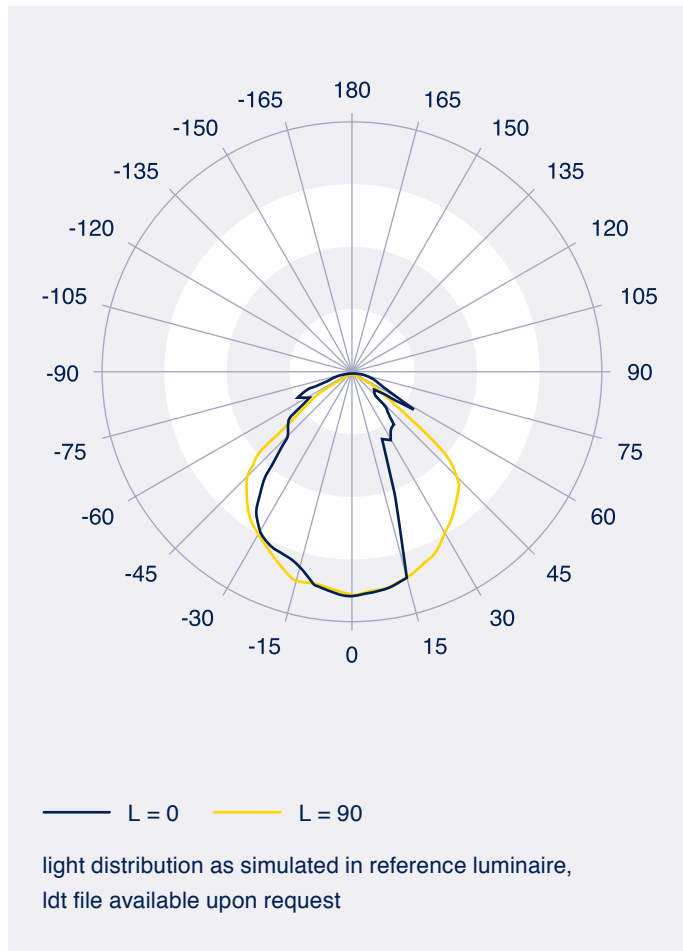
polycarbonate (PC) upon request for advanced fire safety regulations

Applications

wallwasher application

creating asymmetrical light distribution curves, ideally with precollimated source





Product data

standard material	PMMA clear (acrylic) PC upon request
available size	rectangle up to 1500 mm x 300 mm square up to 600 mm x 600 mm customer specific cuts and optional profile edge treatment (milling)
thickness	3 mm (2.5 up to 6.0 mm upon request)
prism pitch	1 mm
refractive index	1.491
transmittance _{D65}	92% (acrylic clear)
efficiency	> 95% (in typical LED luminaire)
temperature range	-40 °C up to +80 °C (acrylic) / 120 °C (PC)
customization options	development of prismatic microstructures for your specific applications, tooling and series production